



Efficient, Effective, Responsive

Thompson County Park Master Plan and Natural Resources Management Plan Task 4 Concept Prioritization

for
May 23, 2019



Agenda



Efficient, Effective, Responsive

- Highlights from Community Feedback on Concept Alternatives
- Confirm Long-term and 10-year Concept
- Identify 5-year Implementation Priorities
- Feedback on Interpretation Framework

Highlights from Community Feedback on Concepts



Vision

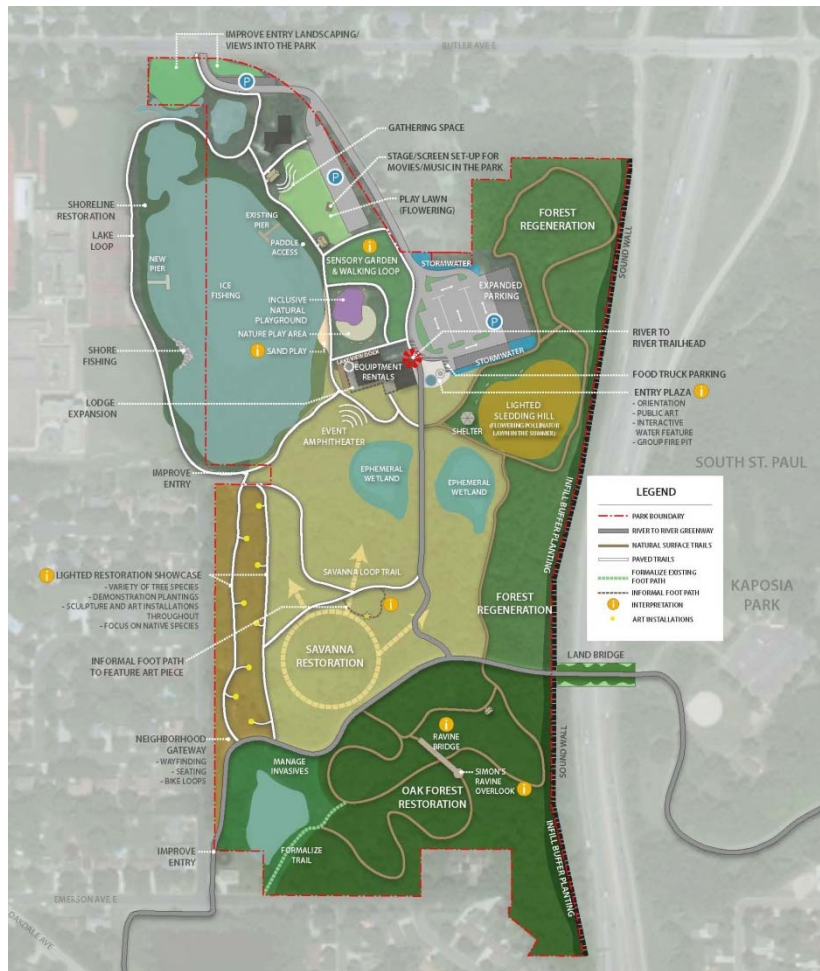
Thompson County Park is a urban oasis that inspires people to participate in vibrant and healthy activities, is responsive to the community, and encourages people to discover nature.

Highlights from Community Feedback on Concepts

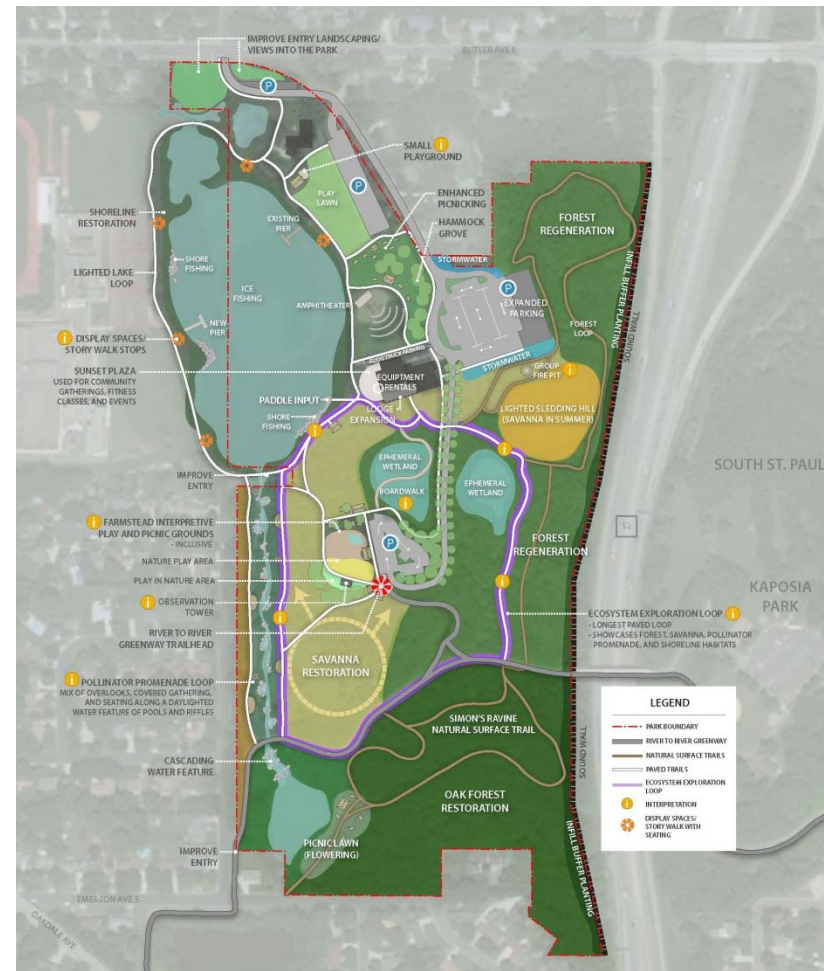


Efficient, Effective, Responsive

Concept A



Concept B



Highlights from Community Feedback on Concepts



Natural resources – Find the balance between more activities and preserving the park's natural resources.

Core habitat – Enhance visitor experience for opportunities to view and enjoy nature and wildlife.

More to do in the park – Provide a variety of activities, rentals, and programming.

Gathering – Provide facility options to meet multiple user needs and group sizes to encourage people to spend more time in the park.

Dakota Lodge – Provide clear direction to and from and expand use to include a trail head, education, rentals, and other activities that will encourage visitors to use the building.

Interpretation and Educational Value – Desire for the park to contribute to science and educational experiences, highlight its natural resources and unique historical significance, and utilize public art.

Lighting and safety – Enhance the feeling of safety and security within the park by use of lighting solutions.

Highlights from Community Feedback on Concepts



Efficient, Effective, Responsive



Cultural significance – Use interpretive elements to help recognize the park as apart of the Dakota homeland by connective native people to the landscape and explore unique amenities such as food trucks and hammocks that may better serve the surrounding Latino community.

Desire for connection – Better access to and from the park, within the park, and to exciting connections such as the River to River Greenway. Emphasis on making the park accessible to all.

Accessibility – Go above and beyond ADA standards with improved seating, pathways, lighting, and accessible play features/experiences throughout.

Parking – Explore parking solutions that accommodate the proposed programming while including features that support the park's desire to contribute positively to the natural elements.

Facilities management – Keep the park beautiful year-round by taking preventative measure against vandalism, litter, and invasive species while maintaining facilities like restrooms and water fountains.

Long Term Concept Development



Efficient, Effective, Responsive



Approach as guided by Community Engagement

- Eliminated the playground, picnic grounds, and trailhead with parking in the central part of the park
- Focused active areas on the north end of the park
- Distributed picnicking at different scales throughout the park
- Incorporated a paddle input and equipment rental area
- Included the pollinator promenade with daylighted stream

Long Term Concept



Efficient, Effective, Responsive



Key Statistics

- 83% of park remains natural
- 1.6 miles of natural surface trails
(today there is about 1 mile)
- 2.3 miles of paved trails
(today there is about 1.75 miles)
- 8 new picnic shelters
 - Amphitheatre intended to also be reservable as a shelter
 - 7 are for 20 people or less and non-reservable
- New inclusive, nature themed playground with integrated picnicking and sensory garden
- 38 acres of restoration

10 Year Concept



Efficient, Effective, Responsive



Long-term and 10-year Concept



Efficient, Effective, Responsive



Natural Resources

Primary

- Shoreline restoration
- Oak Savanna restoration
- Oak Forest restoration
- Forest regeneration

Supportive

- Pollinator promenade with daylighted stream
- Management of invasive plant species
- Stormwater management
- Infill buffer planting

Confirm Concept Priorities



Efficient, Effective, Responsive

Intent

Prioritization of 5-year and 10-year projects

Basis for prioritization

- Estimated Operations & Maintenance Cost
- Potential for Revenue
- Guiding Principles
- Benefit to Cost Ratio
- Community Support

Thompson County Park Concept Projects Prioritization - DRAFT 5/17/19

ID	Description - ID numbers correspond to numbers on the Thompson Park Concept Projects Diagram	Picnic Shelter Included	Project Cost	Running Total	Estimate of Amount of Additional Operations & Maintenance Costs				Potential for Revenue?	Guiding Principle Implemented through Project						Ratio of Benefit to Cost (High = Good)	Community Support	Planning Commission Recommended Priority (Identify if item should be moved in priority)	
					Visitors Services	Buildings Maintenance	Grounds Maintenance	Natural Resources		Welcoming & Safe	Year-Round Activity	Promote Social Gathering	Community Connections to Park	Enhance Lake as Focal Point	Improve Natural Systems				Inspire Learning
1	Shoreline Restoration		\$ 270,000	\$ 270,000				Low						✗	✗	✗	High	High	
2	Natural Resources Phase 1 - throughout park (assumes additional \$300,000 of external funding)		\$ 160,000	\$ 430,000				Medium							✗	✗	High	High	
3	Entrances and Wayfinding Phase 1 (signings at north, west and south entrances and wayfinding signage)		\$ 260,000	\$ 690,000				Low	✗	✗		✗	✗				High	High	
4	Complete ADA Lake Loop (lighting, stony walk stoops, benches)		\$ 209,000	\$ 899,000				Medium	✗	✗	✗	✗	✗			✗	High	Medium	
5	Greenway Improvements (extended trail, gateway, wayfinding, bike loop)		\$ 294,000	\$ 1,193,000				Low	✗	✗		✗				✗	High	Medium	

Confirm Concept Priorities



Efficient, Effective, Responsive

Estimated Operations & Maintenance Cost

Visitor Services - activities, events, and operations that enrich the park experience, draw new visitors, promote park stewardship.

Examples: facility and equipment rentals, interpretation and education programs, volunteer management, special events

Grounds Maintenance - activities and operations that keep outdoor developed areas clean, safe, and attractive.

Examples: mowing, snow/ice removal, minor playground repairs, upkeep of open-air picnic shelters

Confirm Concept Priorities



Efficient, Effective, Responsive

Estimated Operations & Maintenance Cost

Facility Maintenance - activities and operations that keep enclosed or conditioned structures clean, safe, and in good working order.

Examples: janitorial services, HVAC upkeep, minor plumbing/electrical tasks

Natural Resource Management - stabilization, restoration, and ongoing maintenance of the vegetation, water, and wildlife in undeveloped areas.

Examples: savanna restoration, shoreline management, water quality management, invasive species removal

Confirm Concept Priorities



Efficient, Effective, Responsive

Intent

Prioritization of 5-year and 10-year projects

Basis for prioritization

- Estimated Operations & Maintenance Cost
- Potential for Revenue
- Guiding Principles
- Benefit to Cost Ratio
- Community Support

Thompson County Park Concept Projects Prioritization - DRAFT 5/17/19

ID	Description - ID numbers correspond to numbers on the Thompson Park Concept Projects Diagram	Picnic Shelter Included	Project Cost	Running Total	Estimate of Amount of Additional Operations & Maintenance Costs				Potential for Revenue?	Guiding Principle Implemented through Project						Ratio of Benefit to Cost (High = Good)	Community Support	Planning Commission Recommended Priority (Identify if item should be moved in priority)	
					Visitors Services	Buildings Maintenance	Grounds Maintenance	Natural Resources		Welcoming & Safe	Year-Round Activity	Promote Social Gathering	Community Connections to Park	Enhance Lake as Focal Point	Improve Natural Systems				Inspire Learning
1	Shoreline Restoration		\$ 270,000	\$ 270,000				Low						✗	✗	✗	High	High	
2	Natural Resources Phase 1 - throughout park (assumes additional \$300,000 of external funding)		\$ 160,000	\$ 430,000				Medium							✗	✗	High	High	
3	Entrances and Wayfinding Phase 1 (signings at north, west and south entrances and wayfinding signage)		\$ 260,000	\$ 690,000				Low	✗	✗		✗	✗				High	High	
4	Complete ADA Lake Loop (lighting, stony walk stoops, benches)		\$ 209,000	\$ 899,000				Medium	✗	✗	✗	✗	✗			✗	High	Medium	
5	Greenway Improvements (extended trail, gateway, wayfinding, bike loop)		\$ 294,000	\$ 1,193,000				Low	✗	✗		✗			✗		High	Medium	

Concept Review & Prioritization



Efficient, Effective, Responsive



Overall

1	Shoreline Restoration	
2	Natural Resources Phase 1 - throughout park (assumes additional \$100,000 of external funding)	5-Year
3	Entries and Wayfinding Phase 1 (plantings at north, west and south entries and wayfinding signage)	
18	Natural Resources Phase 2 - throughout park (assumes additional \$100,000 of external funding)	
19	Entries and Wayfinding Phase 2 (enhanced planting at north and wayfinding)	10-Year
29	Natural Resources Phase 3 - throughout park (assumes additional \$57,500 of external funding)	
30	Entries and Wayfinding Phase 3 (wayfinding around new trail intersections)	
32	Linear Plaza - Phase 3 - From Butler to North Picnic Shelter	Long-term
37	Land bridge	
38	Sound wall	

Concept Review & Prioritization



Efficient, Effective, Responsive



Northwest

4	Complete ADA Lake Loop (lighting, story walk stops, benches)
6	Improved Water Access Phase 1 (shore fishing, new pier, existing pier improvements, informal water access, interpretation at piers)
7	Inclusive Nature Themed Playground with integrated interpretation
8	Picnicking (picnic shelter, picnic tables, hammocking, lawn, plantings)
20	Improved Water Access Phase 2 (paddle input, boat storage)
23	Play Lawn Improvements (picnic shelter, outdoor classroom seating, screen, improved lawn and plantings)
25	Sensory Garden (plantings, public art, and interpretation)

5-Year

10-Year

Concept Review & Prioritization



Efficient, Effective, Responsive



Northeast

9	Linear Plaza - Phase 1 - Along Playground (includes moving of trail away from lake)
10	Sledding Hill (picnic shelter, picnic tables, fire pit, trail, lighting, natural surface trail)
11	Thompson Park Center Exterior Gathering (lakeside plaza, food truck parking)
12	Thompson Park Center Space and Program Study
14	Parking Lot Improvements (new spaces, removal of berm, maintenance shed, and reconfigured natural surface trails and compost area)
15	Amphitheater (amphitheater, integrated interpretation, trail connections, picnic shelter near lake)
22	Thompson Park Center - renovation for greater public access Phase 1*
24	Linear Plaza - Phase 2 - Along Lawn

10-Year 5-Year

Concept Review & Prioritization



Efficient, Effective, Responsive



Greenway

5	Greenway Improvements (extended trail, gateway, wayfinding, bike loop, interpretation, ecosystem stops)
21	Thompson Park Center/Trailhead Plaza
27	Neighborhood Gateway (picnic shelter, wayfinding, bike loops, interpretation, trail to neighborhood, cascade water feature)

5-Year
10-Year
Long-term

Concept Review & Prioritization



Efficient, Effective, Responsive



Central

13	Daylighted Stream Feasibility Study
16	Pollinator Promenade Phase 1 (trail, picnic tables, ecosystem stop, plantings, natural surface trails)
17	Daylighted Stream*
31	Farmstead Interpretation (observation tower, picnic shelter, hammocking, interpretation, public art, accessible trails)
33	Pollinator Promenade Phase 2 (additional plantings and public art)
35	Thompson Park Center - renovation for greater public access Phase 2*
36	Infill buffer planting between Pollinator Promenade and neighborhood

5-Year

10-Year

Long-term

Concept Review & Prioritization



Efficient, Effective, Responsive



South

26	Ravine Overlook (overlook, picnic shelter, picnic tables, natural surface trail, interpretation)
28	Ravine Bridge (bridge and natural surface trails)
34	Pond Picnicking (picnic shelter and natural surface trails)

10-Year
Long-term

Prioritization Exercise



Efficient, Effective, Responsive

- 5-Year Target is \$3.5 to \$5.5 million
 - Items 1 to 13
 - Items 14 to 16
- 10-Year Target is \$7.5 to 9.5 million *(includes 5-year)*
 - Items 17 to 22
 - Items 23 to 30
- Long-term
 - Items 31 to 38

Interpretation



Efficient, Effective, Responsive



Social Gathering: Find Community Here

Gather with family and friends. Connect with known and new communities. People come here for events and gatherings throughout the year. Here, we honor the past, celebrate the present, and look forward to our shared future.



Interpretation



Efficient, Effective, Responsive



Water Resources: Follow the Flow

Water connects us all through pipes, streams, rivers, and lakes. Rainwater and snow melt flow from our home and neighborhoods to the Mississippi River, recharging drinking water supplies and sustaining ecosystems along the way. Here we learn how to protect water quality and why it's important.



Interpretation



Efficient, Effective, Responsive



Natural Resources: Leave a Sustaining Legacy

Here, people learn to be environmental stewards. Because of its size, location, and history, this urban park provides opportunities for bird-watching, nature walks, and habitat restoration. Apply the lessons learned here at home and in our community.



Interpretation



Efficient, Effective, Responsive



Healthy Lifestyle: Play in the Park

Here, people of all ages can bike and hike, sled and skate, paddle and play. Cast a line, spot a bird, watch a concert. Whether with a group or on their own, Thompson County Park offers visitors a variety of active and passive recreational opportunities year-round.



Interpretation



Efficient, Effective, Responsive



Cultural History: We are All Related

Here, we are in Dakota Homeland. We are part of a bigger story. People have been here, in this place, for thousands of years. What is now a park was once a farm, home, and haven.



Next Steps



Efficient, Effective, Responsive

- Present to Physical Development Committee in June
- Prepare draft Master Plan